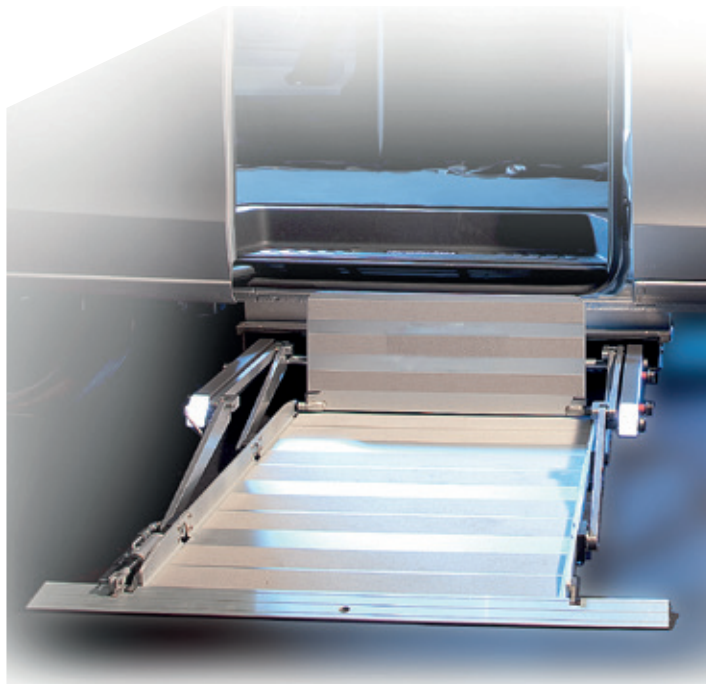




## F3 RE 030/60

### UNDER CHASSIS RETRACTABLE LIFTS SIDE FITTING FOR PANEL VANS

LOAD CAPACITY: 300 KG



#### DESCRIPTION

F3 RE 030/60 is a retractable tail-lift fully automatic for side installation under panel vans. The steel box that contain the lift is with reduced dimensions that allow installation on a wide range of vans such as:

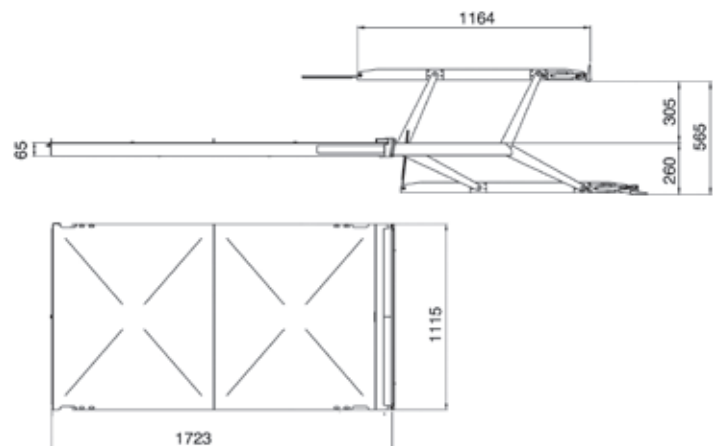
Volkswagen	T6 Colorado-Centervan L1, L2
Mercedes Benz	V-Class C, L, XL
Renault	Trafic L1, L2
Fiat	Talento L1, L2 - Ducato L2
Opel	Vivaro L1, L2
Ford	Custom L1, L2
Citroen	Jumpy L2 - Jumper
Peugeot	Traveller L2 - Boxer
Toyota	Proace L2

#### SPECIFICATIONS

Platform:	Aluminum
Platform dim.:	1160 mm deep 760 mm wide
Lift cylinders:	2
Sliding system:	Electric deployment and stowage
Power supply:	12 V
Weight:	140 Kg

#### SUGGESTED OPTION

- Radio remote control;
- External mount power unit;
- Vehicle Rising kit



#### PROVIDED BY:

- Battery Disconnect Device With Key Main Switch
- Emergency Mechanical Hand Pump
- Toe Guard Protection Bridge Plate
- Automatic Safety Flap on platform tip



## F3 RE 030/60

### UNDER CHASSIS RETRACTABLE LIFTS SIDE FITTING FOR PANEL VANS

LOAD CAPACITY: 300 KG

#### TECHNICAL DATA

Load capacity (max)	Voltage	Platform dimension		Cassette dimension		Weight	Note
		Width	Depth	Width	Depth		
300 Kg	12 Volt	760 mm	1160 mm	1115 mm	1723 mm	140 Kg	65 mm thick full sealed steel box

01/2021

